



## *Factory bodied DAF LF and CF Series*



*Designed, manufactured and tested by DAF,  
the body is set to the same consistently  
high quality standards built into every DAF*

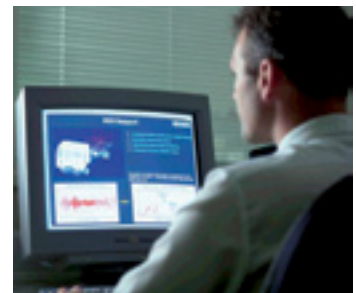


## ***A truck that delivers***

***Practical, reliable and with superior build quality, the pedigree of the DAF really shines through.***

With low chassis weight for the highest payloads and outstanding manoeuvrability, it's easy to see why the LF and CF Series are Britain's most popular trucks. Every aspect has been designed around urban distribution and maximum productivity. Engines from 140 to 280 bhp, are now available with AS-Tronic automated transmission to ensure excellent performance.

In addition, by choosing a DAF LF or CF complete with body, operators also receive the added reassurance of exceptional back-up and support for the entire life of the vehicle – a service that maintains DAF's position as the UK market leader.





# ***Built for convenience***

***Market leading DAF LF and CF models from 7.5 tonne to 18 tonnes are now available with the in-house designed box or curtainsided body, factory built to ensure the highest whole vehicle quality standards, to streamline delivery schedules and to provide the best back-up support levels for the complete vehicle.***

Built on the production line in the UK, DAF are now offering the range of pre-bodied box or curtainsided versions of the LF45 4x2 rigid at 7.5 tonne to 18 tonne and the CF65 at 18 tonne, ensuring all round value for money and consistently high quality. Available with either wide lath roller shutter or double rear doors, with or without column mounted or tuck away tail-lifts, bodies can be tailored to meet operator needs.

## ***It's a DAF from front to back***

Easy to order and of consistently high quality, these DAF factory bodied trucks can be supplied with an integral Repair & Maintenance contract if required. Providing you with enhanced residual values and the same quality standards of service you'd expect in a DAF, but just delivering it in a faster and more accessible way.

## ***Peace of mind***

To finance your factory bodied DAF you can rely on PACCAR Financial to help make it possible. With deals from as little as £115 per week\*, we can find you a personalised plan customised to your individual needs.\*

\*Terms and conditions apply. Other finance examples are available on request from PACCAR Financial Limited, Eastern Bypass, Thame, Oxon OX9 4GH. UK Business Users only. Weekly rentals collected on a monthly basis. Finance is subject to credit acceptance and a guarantee may be required. All rates exclude VAT and are indicative only. See your local DAF dealer for full details.





# ***The DAF Box Body and Curtainsider***

## ***Curtainsider***

- *Double rear doors*
- *Galvanised steel underframe*
- *2x2 weave curtains with stainless steel locking buckles*
- *Separate steel top rail*
- *Optional tuck away tail-lift with indoor and outdoor controls and in-cab isolation switch*

***Providing the perfect one-stop solution, the DAF Box Body and Curtainsider are factory built trucks that are ready and waiting to go to work.***

The robust DAF curtainsided body is carefully constructed on the production line in the DAF factory in parallel with the chassis, and is built using only materials of the highest quality to ensure long term productivity in tough conditions. The 2x2 weave curtains with stainless steel locking buckles and separate steel top rail provides quick and easy access for a fast turnaround between deliveries. With standard double rear doors and anodised aluminium sideguards the curtainsided body can also be specified with a tuck away tail lift depending on individual operator needs.





# *The one stop solution*

***Available with either roller shutter or double rear doors, the Box Body has DAF's superior build quality written all over it.***

Built entirely inside the DAF factory and to the highest standards, the aluminium extrusions, 17mm thick GRP side panels, one piece translucent roof and a galvanised steel rear frame structure provides a secure and durable body which urban distribution demands. Ease of access is ensured through the optional column or tuck away tail-lift with indoor and outdoor controls for driver convenience.

## **Box Body**

- *Roller shutter or double rear doors*
- *Galvanised steel underframe*
- *Anodised aluminium sideguards*
- *Optional column or tuck away tail-lift with indoor and outdoor controls and in-cab isolation switch*





DAF Trucks Limited  
Eastern Bypass  
Thame  
Oxfordshire OX9 3FB  
United Kingdom  
Tel: +44 (0)1844 261111  
Fax: +44 (0)1844 217111  
[www.daf.co.uk](http://www.daf.co.uk)

FACTORY  
BOD/6PP/GYRO/1K/0408

*driven by quality*

